

## Setting up a LED screen with NovaLCT

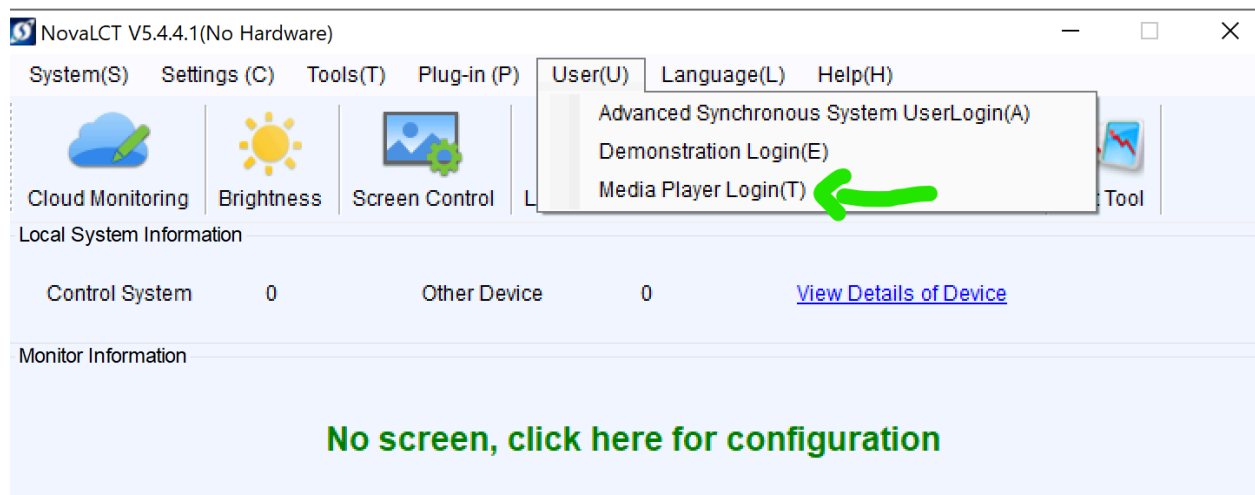
Download the NovaLCT software from this link:

<https://en-website001.oss-us-east-1.aliyuncs.com/NovaLCT%20V5.4.4.3.zip>

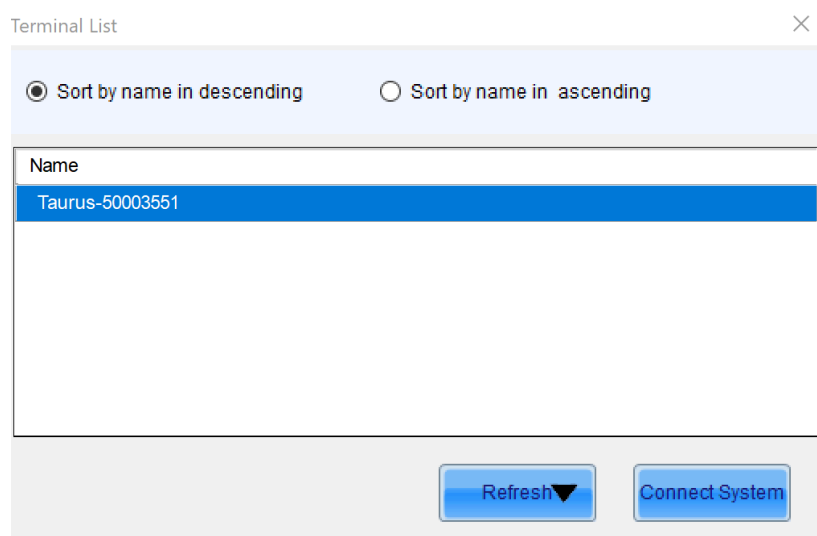
Or find the latest version from <https://novastar.shop/downloads/>

Make sure the computer is connected to the same network as the Taurus controller. You can also connect to the controller's built-in Wifi using the AP and Password printed on the controller itself.

Once you start NovaLCT, select 'Media Player Login' from the User menu:



Select your Taurus controller and click “Connect System”:

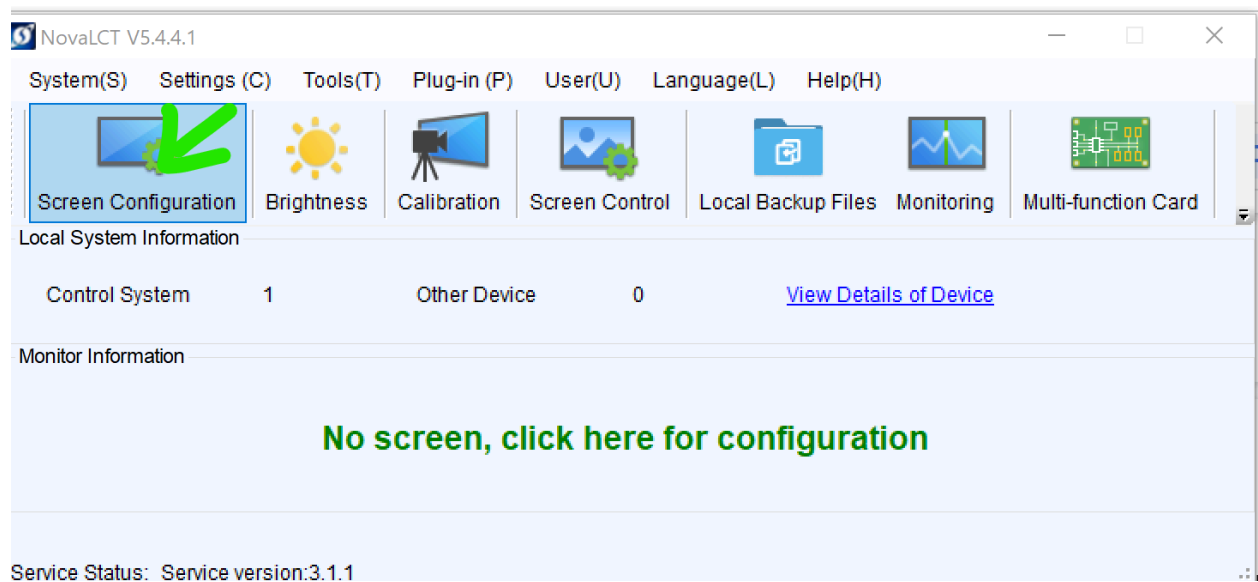


The default username and password are:

Username: admin

Password: 123456

Next, click 'Screen Configuration':




Select 'Configure Screen', then click 'Next':

Screen Configuration ✕


Select Communication Port

Current Operatio... 192.168.86.62:5200 ▾

☒ Configure Screen 

☐ Cloud Restore Europe ▾

☐ Local Restore



Normally, the receiving card parameters are set from the factory. Do not change anything on the first tab. Click 'Read from Receiving Card' to read the settings from the panels. Note the Width and Height parameters (circled in red) reported by the receiving card. Then switch to the 'Screen Connection' tab.

Screen Configuration-192.168.86.62:5200

Receiving Card **Screen Connection**

**Module Information**

Chip:	ICN2038S_...	Size:	64W×32H	Scanning Type	1/8 scan
Direction:	Horizontal	Data Groups	2	<a href="#">Adjust RG...</a>	

**Cabinet Information**

☒ Regular

Width (Pixel) 128 ≤131

Height (Pixel) 128 ≤256

Module Casc... From Right to L

☐ Irregular

Width: ?? Height: ??

Loading error. Please try to adjust pe...

[Construct Ca...](#) [View Cabinet](#)

[Set Rotation](#)

**Performance Settings**

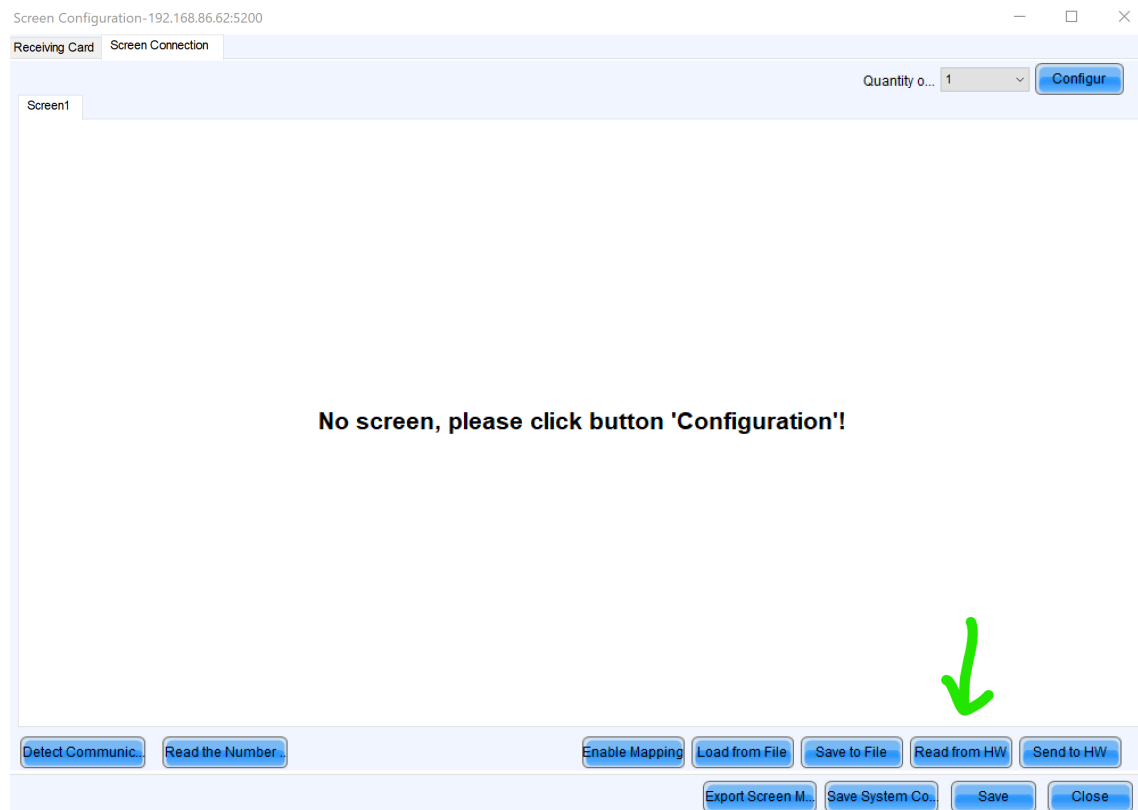
[Data Group E...](#) [More Settings](#) ☐ 18bit+

Refresh Rate	480	Hz	Refresh Rate Ti...	4
Grayscale Level	Normal 4096		Grayscale Mode	Refreshing Rate Fir...
Shift Clock Fre...	12.5	MHz	Duty Cycle	50 (25~75) %
Phase Position	2		Low Grayscale C...	3
Row Blanking ...	25	(=2.00us)	Ghost Control En...	24 (1~24)
Line Changing ...	3	(0~23)		
Minimum OE w...	160 ns			
Brightness Effi...	68.75%			

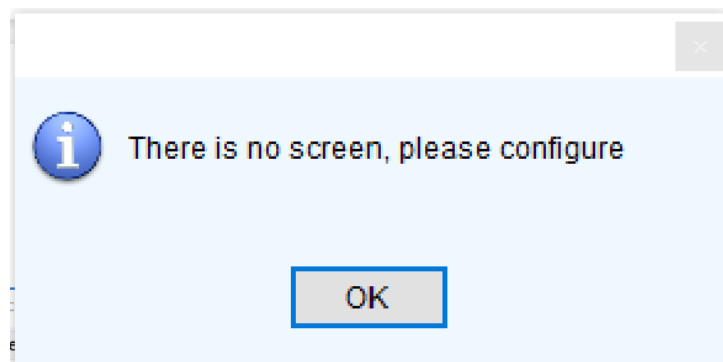
[Smart Settings](#) [Load from File](#) [Receiving Car...](#) [Save to File](#) [Read from Re...](#) [Send to Recei...](#) [Restore Facto...](#)

[Export Screen M...](#) [Save System Co...](#) [Save](#) [Close](#)

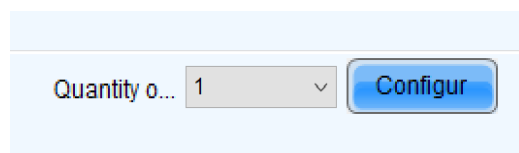
Try clicking 'Read from HW', but if the screen is not working most likely you will see



Try clicking 'Read from HW', but if the screen is not working most likely you will see this message:



In this case, select quantity of screen: 1 and click 'Configure'



You will see a screen like this:

Screen1 Quantity o... 1 Configure

Screen Type: ☒ Standard Screen ☐ Complex Screen

Sending Card Number: 1

Ethernet Port No.: 1

Receiving Card Size ↗

Width: 128 Apply to Entire...

Height: 128 Apply to Entire...

☐ Set Blank Apply to the current...

Quick Connection

Basic Information

Coordinate: X: 0 Y: 0 Virtual Mo... ☐ E... RGB

Columns: 1 Rows: 1 Reset All ☐ Hided... Red Star Left Arrow Right Arrow

1 Sending Card: Port: Receiving Card: Width: 0

Zoom: < | > 1 Note: Click or drag the left mouse button t...

Detect Communic... Read the Number... Enable Mapping Load from File Save to File Read from HW Send to HW Export Screen M... Save System Co... Save Close

Make sure the cabinet size is set correctly to describe the number of LED pixels in your cabinets. Normally this should match the numbers shown on the receiving card tab. Enter the number of rows and columns of how the cabinets are set up in the screen, .e.g. 2 cabinets tall and 3 cabinets wide:

The display will now show how your LED screen is set up.

Screen Configuration-192.168.86.62:5200

Receiving CardScreen Connection

Quantity o... 1Configure

Screen1

Screen Type:

☒ Standard Screen☐ Complex Screen

Sending Card Number

1

Ethernet Port No.

1

Receiving Card Size

Width: 128

Apply to Entire...

Height: 128

Apply to Entire...

☐ Set Blank

Apply to the current.

Quick Connection

2

10

5

11

5

11

2

10

Basic Information

Coordinate: X: 0Y: 0Virtual Mo...☐ E...

Columns 3Rows 2ResetAll☐ Hided ...Red

☆

←

→

	1	2	3
1	Sending Card: Port: Receiving Card: Width:0	Sending Card: Port: Receiving Card: Width:0	Sending Card: Port: Receiving Card: Width:0
2	Sending Card: Port: Receiving Card: Width:0	Sending Card: Port: Receiving Card: Width:0	Sending Card: Port: Receiving Card: Width:0

Zoom:

<

>

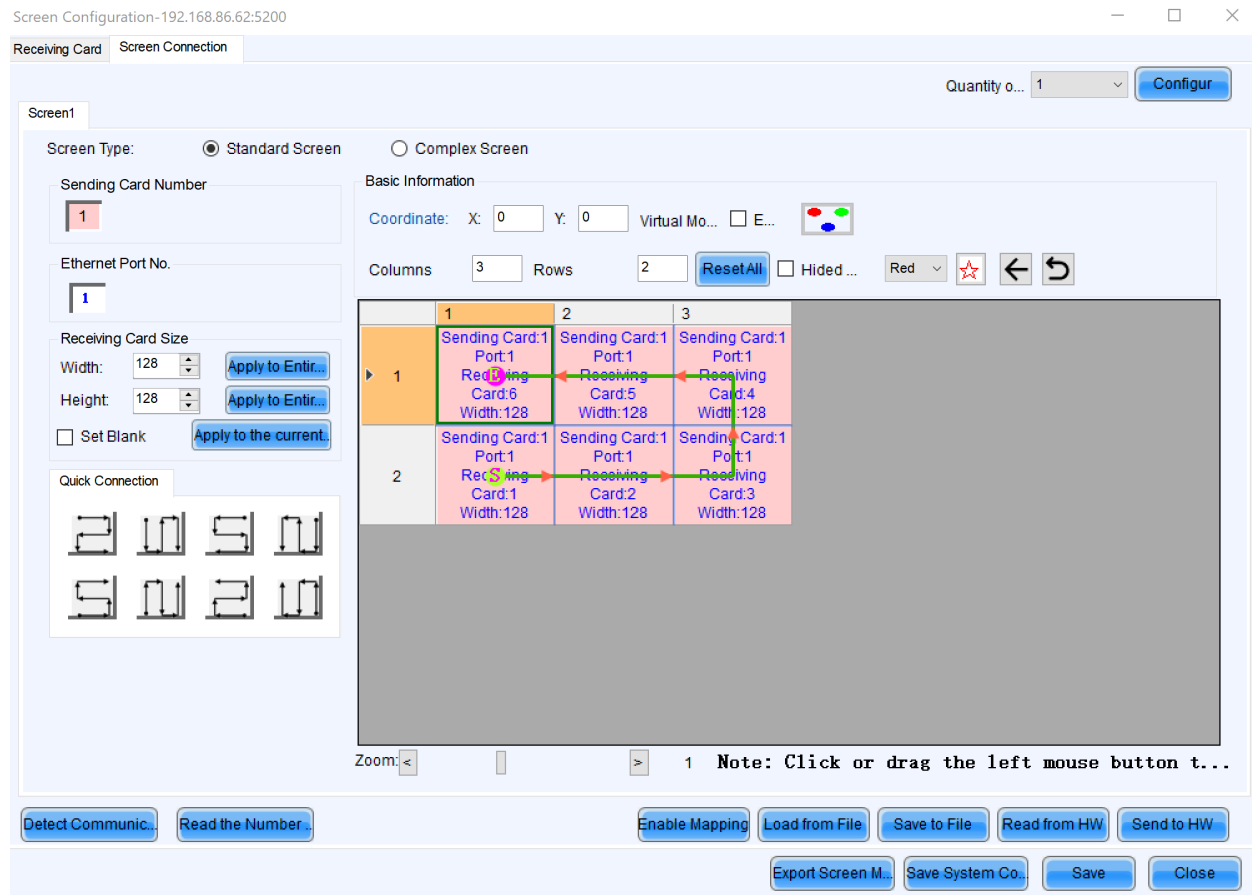
1Note: Click or drag the left mouse button t...

Detect Communic...Read the Number...

Enable MappingLoad from FileSave to FileRead from HWSend to HW

Export Screen M...Save System Co...SaveClose

Next, click the cabinet squares in the order that the data cable is daisy-chained through the screen (as seen from the front), for example:



Now click 'Send to HW' and check that the screen now displays correctly. If the screen shows portions of the expected display, but seems out of order then double check the cabinet size and order and try again.

**IMPORTANT: Once the screen works correctly, press the 'Save' button to make those changes permanent**

You can now exit NovaLCT