

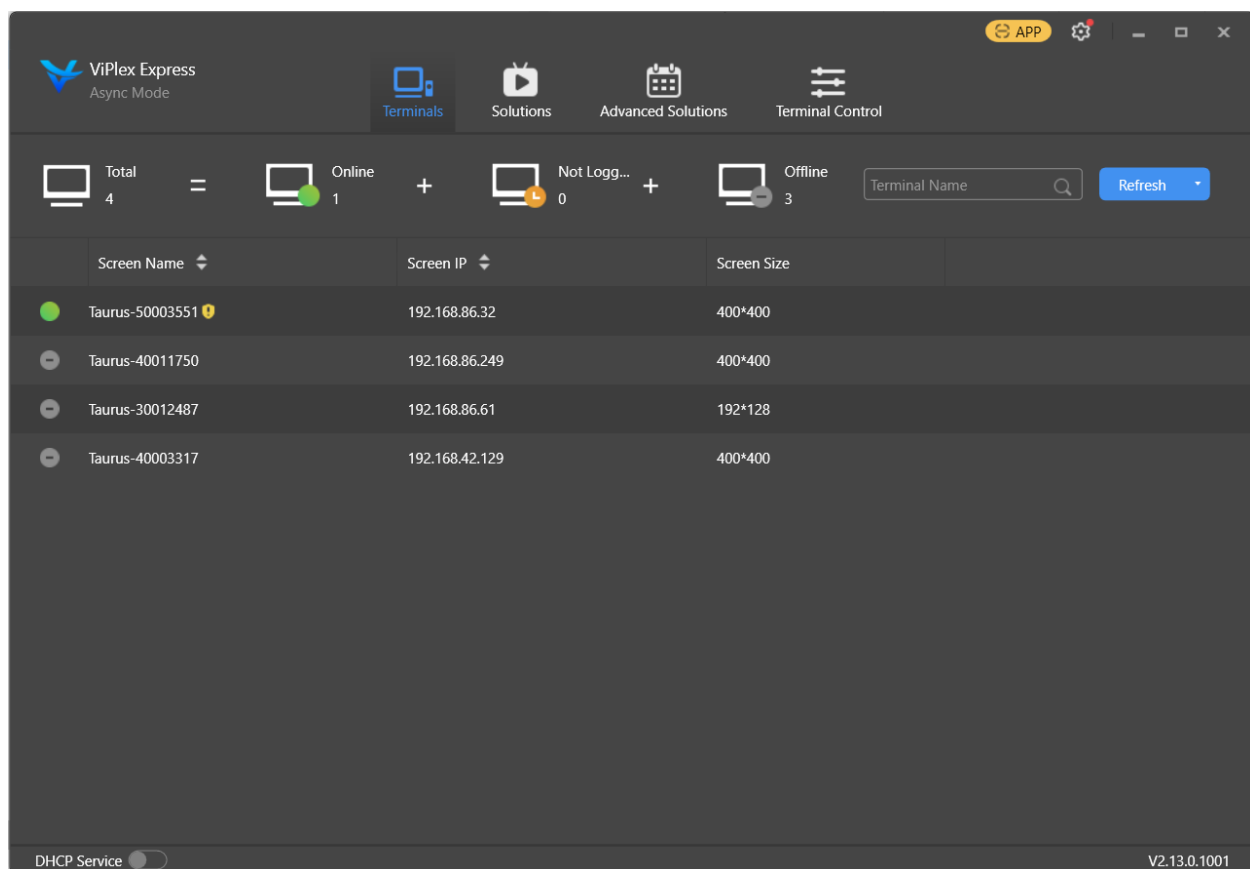
## Time Drops LED Screen driver software Installation guide for Novastar Taurus controllers

### Prerequisites:

1. Taurus controller is set up and configured to drive the LED screen
2. Windows computer with Novastar ViPlex Express software installed
  - a. Go to <https://novastar.shop/en/downloads/>
  - b. Download and install the latest version of Viplex Express
3. Have the latest version Time Drops scoreboard apk file available on the computer  
<https://time-drops.com/app-novastar-release.zip>

You will have to unzip that file to be able to install the .apk file inside the archive

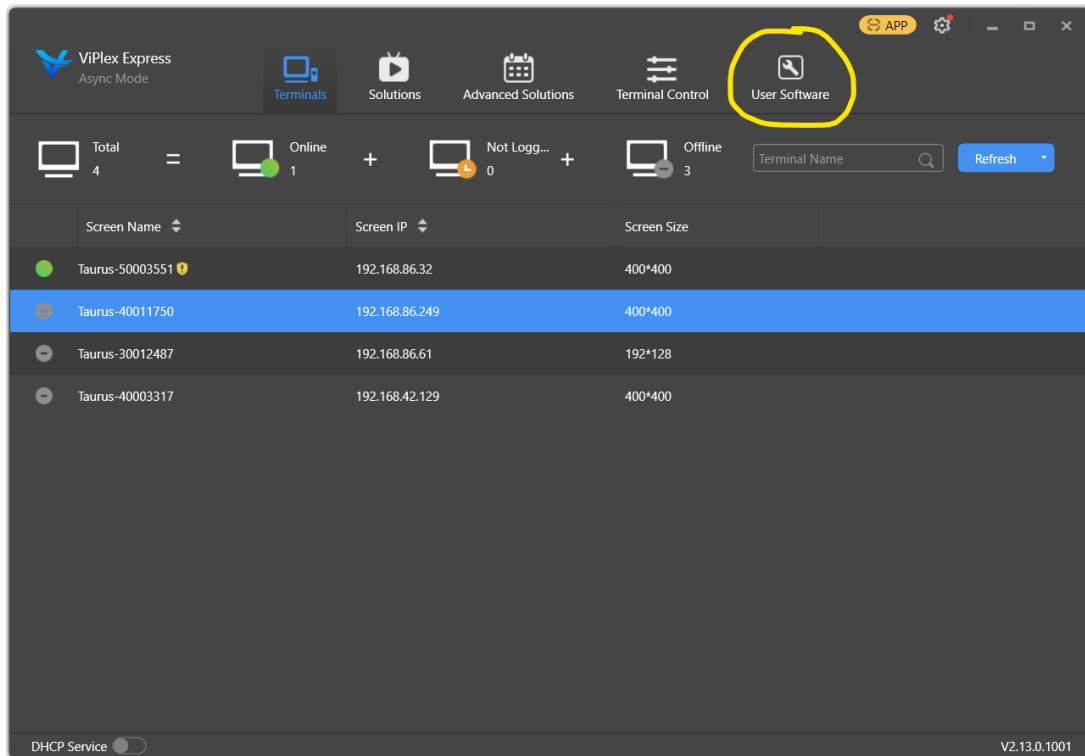
Once you start ViPlex Express, you may be prompted to choose between 'Async' and 'Studio' mode. Select the 'Async' mode. You can switch the mode also using the gear icon in the top. You will see a list of controllers which are available on the local network:



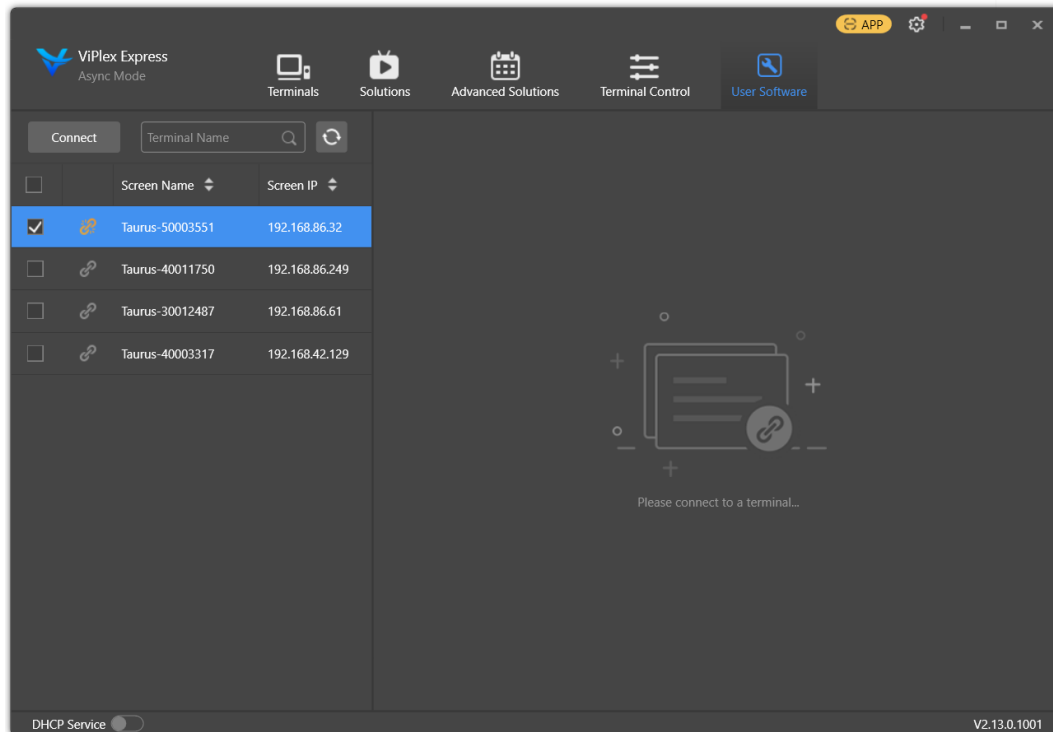
Select your controller and click connect. The factory password is usually printed on a sticker on the controller enclosure, but usually defaults to '12345678' or '123456'. The ViPlex software will

nag you to change the password. If you do change the password, make sure you do not forget it later as otherwise a factory reset is needed which will wipe all your settings!

On the home screen of ViPlex Express, type the following on the keyboard: 'novasoft' (you need to type blindly into the window). This will enable the hidden 'User Software' Menu:



Once you click on that menu, you get to the User Software screen:



Select your controller and click the 'Connect' button. You will be prompted with a login screen

Default Username: admin

Default Password: 123456

Note that this may be a different password from the first one. The same precautions about changing it apply here.

After successful login, the link icon will turn green and you can select the controller to make modifications.

ViPlex Express

Async Mode

Terminals

Solutions

Advanced Solutions

Terminal Control

User Software

APP

Connect

Terminal Name

Screen Name

Screen IP

☐

Taurus-50003551

192.168.86.32

☐

Taurus-40011750

192.168.86.249

☐

Taurus-30012487

192.168.86.61

☐

Taurus-40003317

192.168.42.129

Current screen:

Taurus-50003551

Current information acquiring time:

4/15/2022 2:54:52 PM

ADB

PlayService

Restart Now

Software List

File path

Install

☐ Automatically run after installation

☐ Auto launch on startup

Installed Applications

Name

Name	Version	Status	Operation
Android System Web...	373018605	Not running	Run   Stop   Uninstall
Android系统	22	Not running	Run   Stop   Uninstall
HTML 查看程序	22	Not running	Run   Stop   Uninstall

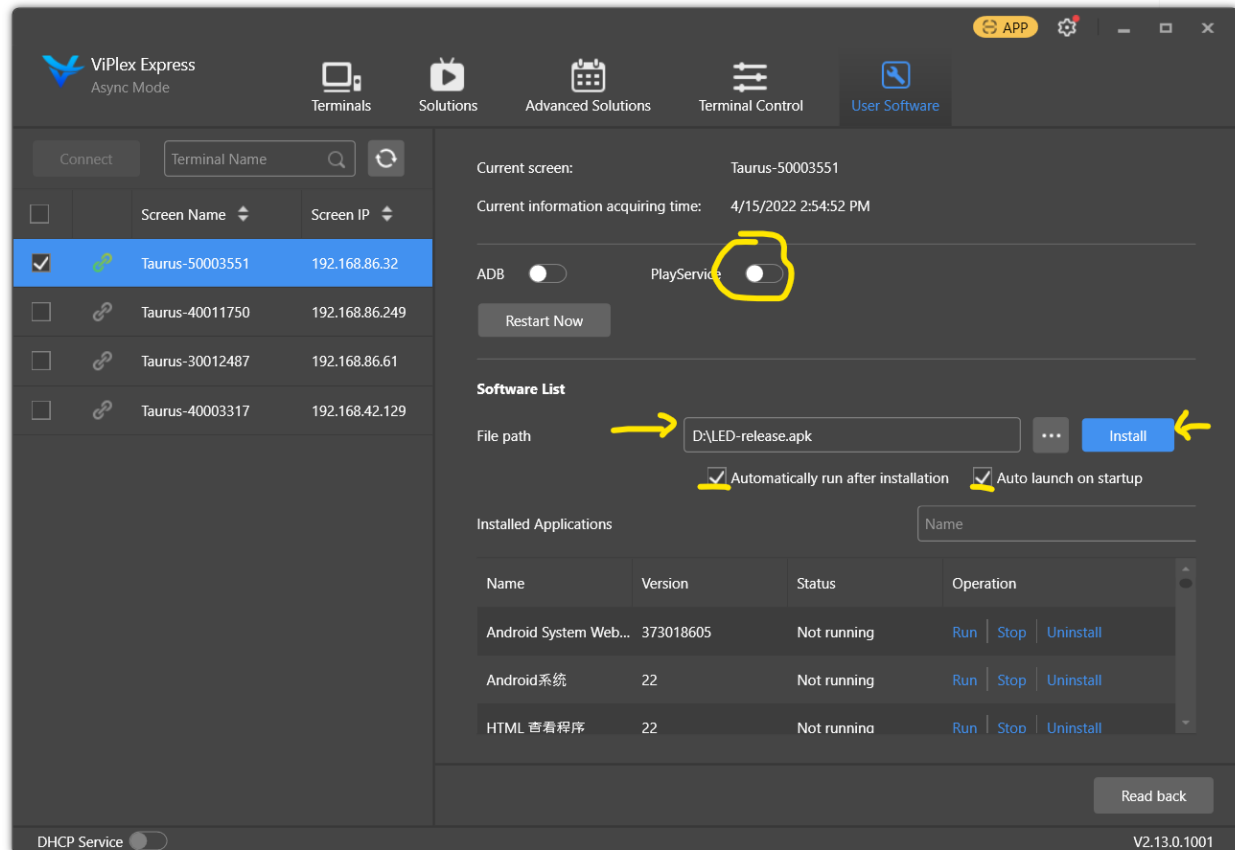
Read back

DHCP Service

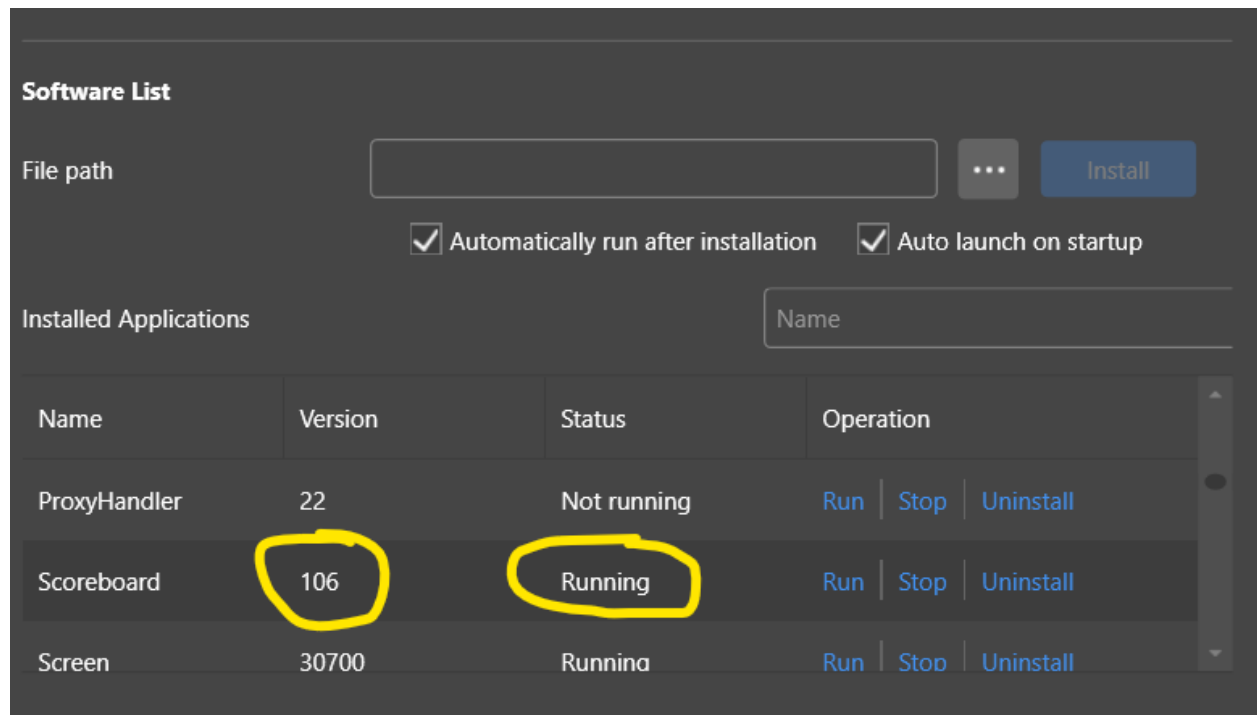
V2.13.0.1001

Now you need to make the following changes to this screen:

1. Turn off the PlayService. This disables the default Novastar display application
2. Select the LED driver .apk file from the downloaded .zip archive in the file path
3. Check 'Automatically run after installation'
4. Check 'Auto launch on startup'
5. Click Install.



After successful installation, you can scroll down the list of 'Installed Applications' to verify that the Scoreboard app is running and has the latest version:



The scoreboard app should automatically take over the display screen and connect to the Time Drops Console app on the tablet. NOTE: there is a button labeled 'SWITCH' on the Taurus controllers which will toggle the display between the HDMI input and the internal software. If the screen remains blank after installation of the APK you should press that switch.

Any further settings can be performed from the tablet app. Go to 'Displays...', select the 'rockchip' display and switch it into LED Matrix mode, and enter the width and height (in pixels) of your LED screen. Then press 'Update'. Once the screen looks satisfactory, press 'SAVE'

NOTE: Screen brightness and other settings still need to be controlled through the Viplex application, or also the 'Viplex Handy' mobile app on a phone.

The time-of-day clock which is displayed on the scoreboard is taken from the Taurus clock, this can be set under 'Time Synchronization' in Viplex. Please make sure that you set the time zone correctly, and configure automatic synchronization from the North American NTP server.